

A Wanderoo in the Wilderness

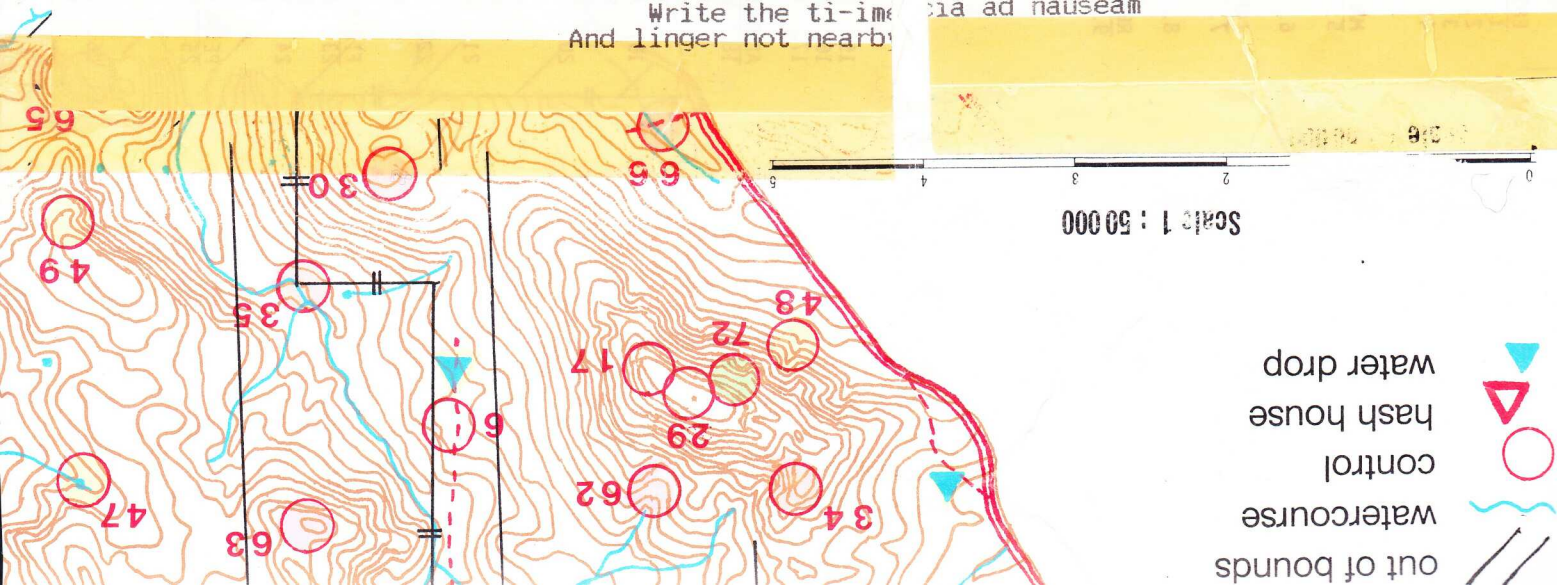
	Points		Points	
1	Big fallen tree on faint NW/SE track on the summit	10	37	By two large red gums
2	Heap of gravel	10	38	Treebridge over the creek
3	Near large rock surface in 100m clearing	10	39	West of rock clearing
4	Gravel pit	10	40	Blazed tree on a track
5	A track creek crossing	10	41	The creek junction
6	Top of a knoll	10	42	In the creek
7	Rock at the creek junction	20	43	Burnt tree in small clearing
8	Rocky mound	20	44	North of rocky clearing
9	North edge of small sandy clearing	20	45	A creek junction
10	Tree on rock face 30 x 10 m	20	46	The knoll
11	Tree on the track	20	47	Foot of the dam wall
12	The top of the spur	20	48	Mouth of the gully
13	A rocky knoll	30	49	Rocky Knoll
14	The creek junction	30	50	The creek junction
15	A WANDOO IN THE WILDERNESS (a leaning wandoo in wide valley)	30	51	North West edge of 100m clearing
16	On the saddle	30	52	Rocks on N end of the knoll
17	E end of the ridge	30	53	The track creek crossing
18	On the knoll	30	54	Change of vegetation
19	Tiny trench by a track	30	55	Gate 100m @ 340
20	On an E/W track between two knolls	30	56	3m dome shaped rock S of a creek
21	Rocky knoll on end of spur	30	57	Bald blackboy by a rock outcrop
22	Gravel pit	30	58	The road junction 30 metres @ 090
23	Top of the rise	30	59	The Sting
24	Felled tree	30	60	The creek track junction
25	Large red gum in NE of small clearing	40	61	Small clearing near creek junction
26	Track crossing the creek	40	62	Boulders in the creek 100m N of vegetation change
27	Tree across the creek	40	63	Boulders near the peak
28	Fallen tree on a track	40	64	Corner post with a casuarina
29	The trig point	40	65	Knoll at NE end of the summit
30	Large tree by a NE/SW track	40	66	A track crossing the creek
31	Rocky outcrop at end of the ridge	50	67	The gentle summit
32	Corner of 4 paddocks	50	68	Log in rocky clearing 50m at 038
33	The dam	50	69	Trees at centre of 200m clearing
34	NE edge of the summit	50	70	Southern edge of a large marsh
35	By a smooth rock face by the creek	50	71	The creek junction
36	The track/creek crossing	50	72	A shapely tree on steep rocky slope (alias The Flasher)

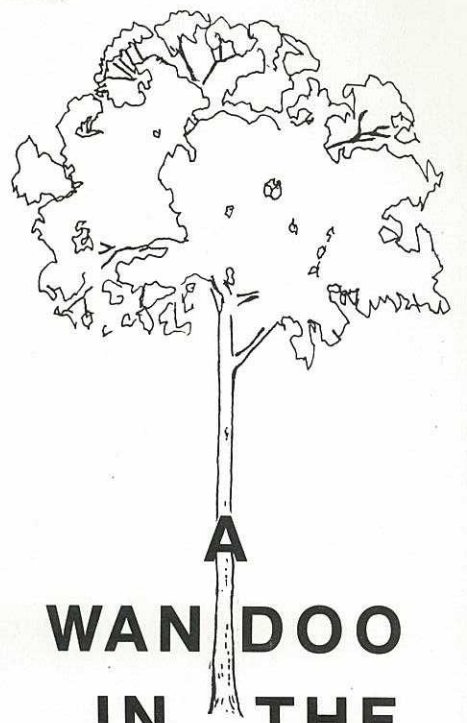
tune of I Love to go to Wandering)

The song of the Wanderoos (more wandering in small circles.

Recommended to be sung when you see a Wandoo tree.

I love to go to Wanderoos I will see,
 And as I go a-Wandering
 Write the team name
 Write the time in minutes
 And linger not nearby
 via ad nauseam





WAN DOO IN THE WILDERNESS

Setters : Paul Setchell
: Peter Wilshaw

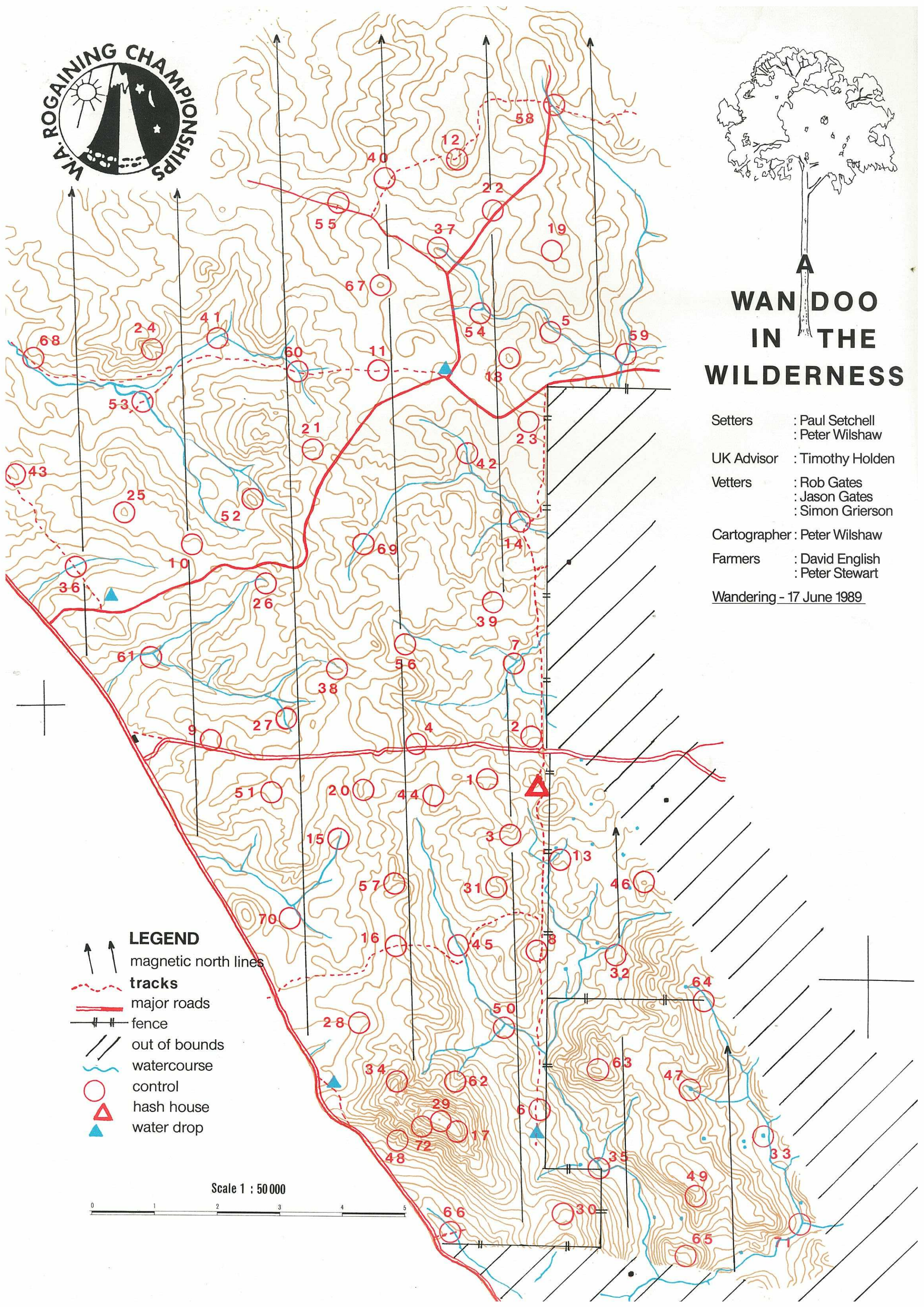
UK Advisor : Timothy Holden

Vetters : Rob Gates
: Jason Gates
: Simon Grierson

Cartographer : Peter Wilshaw

Farmers : David English
: Peter Stewart

Wandering - 17 June 1989



LEGEND

- magnetic north lines
- tracks
- major roads
- fence
- out of bounds
- watercourse
- control
- hash house
- water drop

Scale 1 : 50 000

